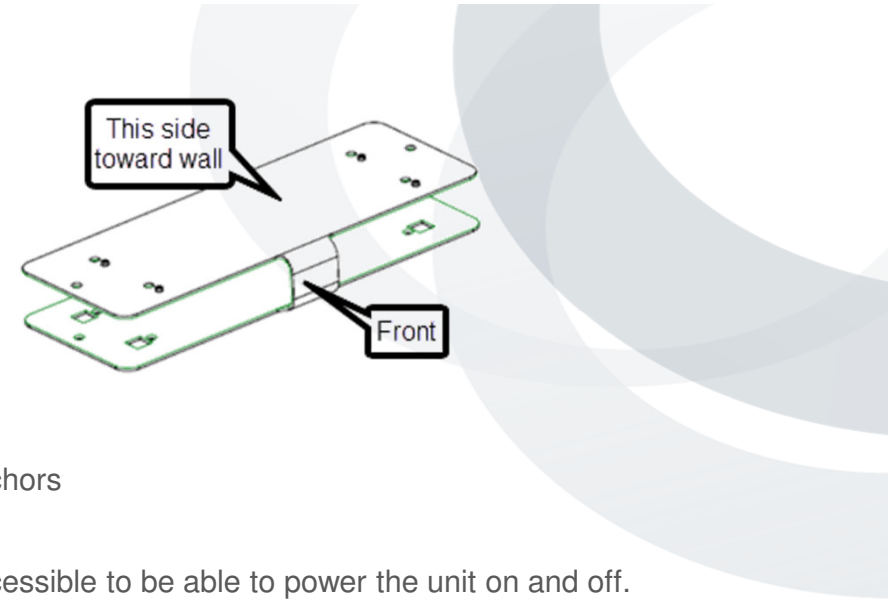


Wall mounting bracket for RealPresence Group 300/310 & 500

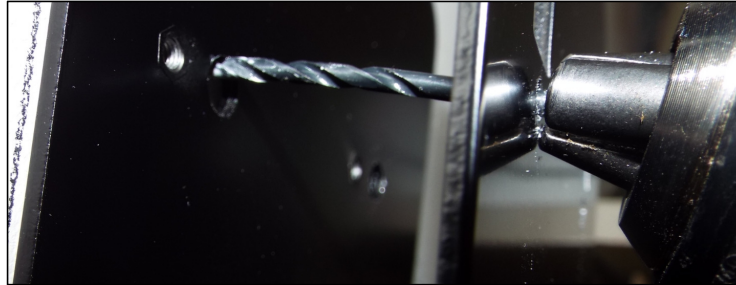
- Was not designed for this application but works
- Parts needed:
 - From Polycom:
 - the 'U bracket' (2215-65169-002)
 - 4 x #6 plastic wall anchors
 - 4 x #6 flat head screws to be used in the above anchor
 - Tools: Level, screwdriver, drill, 3/32 drill bit, drill bit for anchors
- Pick a mounting position, like behind a monitor
 - Be certain the front of the codec (side with the 'tab') is accessible to be able to power the unit on and off.
- Will need to mount the Power supply separately
- For cable management you will want shorter cables than provided with the RealPresence Group Series
 - HDCI camera cables: 1m 2457-64356-100, 457mm 2457-64336-018, 300mm 2457-64356-030
 - HDMI
 - IEC power cord (depending on outlet location)
 - LAN cable (depending on outlet location)



Suggested steps to wall mount U-bracket



Step 1: Level and mark position



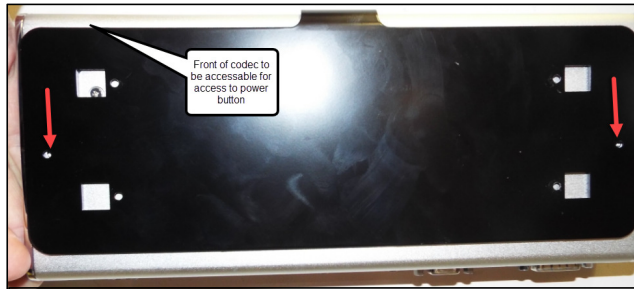
Step 2: While holding the bracket in position use a 3/32" drill bit to 'mark' hole positions. When complete drill holes, sized per the anchors used, for the anchors.



Step 3: Install anchors



Step 5: Mount bracket using the installed anchors, all 4 positions



Step 6: Mount the codec into the bracket using 2 M3x10 pan head screws

Step 6: Connect cables as necessary prior to mounting the display in front of the RealPresence Group Series system

